



LUXURY PERSONIFIED

LUXURY PERSONIFIED



**PRISM**  
EXECUTIVE SUITES

SEC-2, GWAL PAHARI, GURGAON - FARIDABAD ROAD, GURGAON. HARYANA



**PRISM**  
EXECUTIVE SUITES

a project by  
 **NINANIYA GROUP**  
BUILDS YOUR DREAM.

**Head Office :**  
Ninaniya Estates Ltd.  
278/3, Sri Krishna Nagar, Old Delhi Road, Gurgaon  
Haryana - 122001 (INDIA)  
Ph. : +91 124 2327601, Fax : +91 124 2327768

**Corporate Office :**  
5-17, Second Floor, Central Plaza,  
Golf Course Road, Sector 53, Gurgaon  
Haryana - 122002 (INDIA)  
Ph. : +91 124 4284451, Fax : +91 124 4284452

“

It's not just a location,  
but a blend of surprise,  
where dreams comes in  
platter & destiny rise.

**PRISM**  
EXECUTIVE SUITES





Standing high as one of the prime buildings on the Gurgaon-Faridabad road, Prism-Executive Suites introduces itself as a place of unbound opportunities and unprecedented ecstasy. Drawing your immediate attention with its imposing exterior, you can't miss what it holds inside creating a small world of its own along this fast lane connecting two major cities. Weaving a story around everyone involved, the integrated commercial complex has just one thing in common with you – your dreams are its commitment and your passion is its aim. Decked with world-class facilities, Prism-Executive Suites, open up a wide horizon for anyone who steps in with a set goal to win over the world.

Luxury Personified  
this is a place that knows exactly what it takes to bring down the focus of the world over you



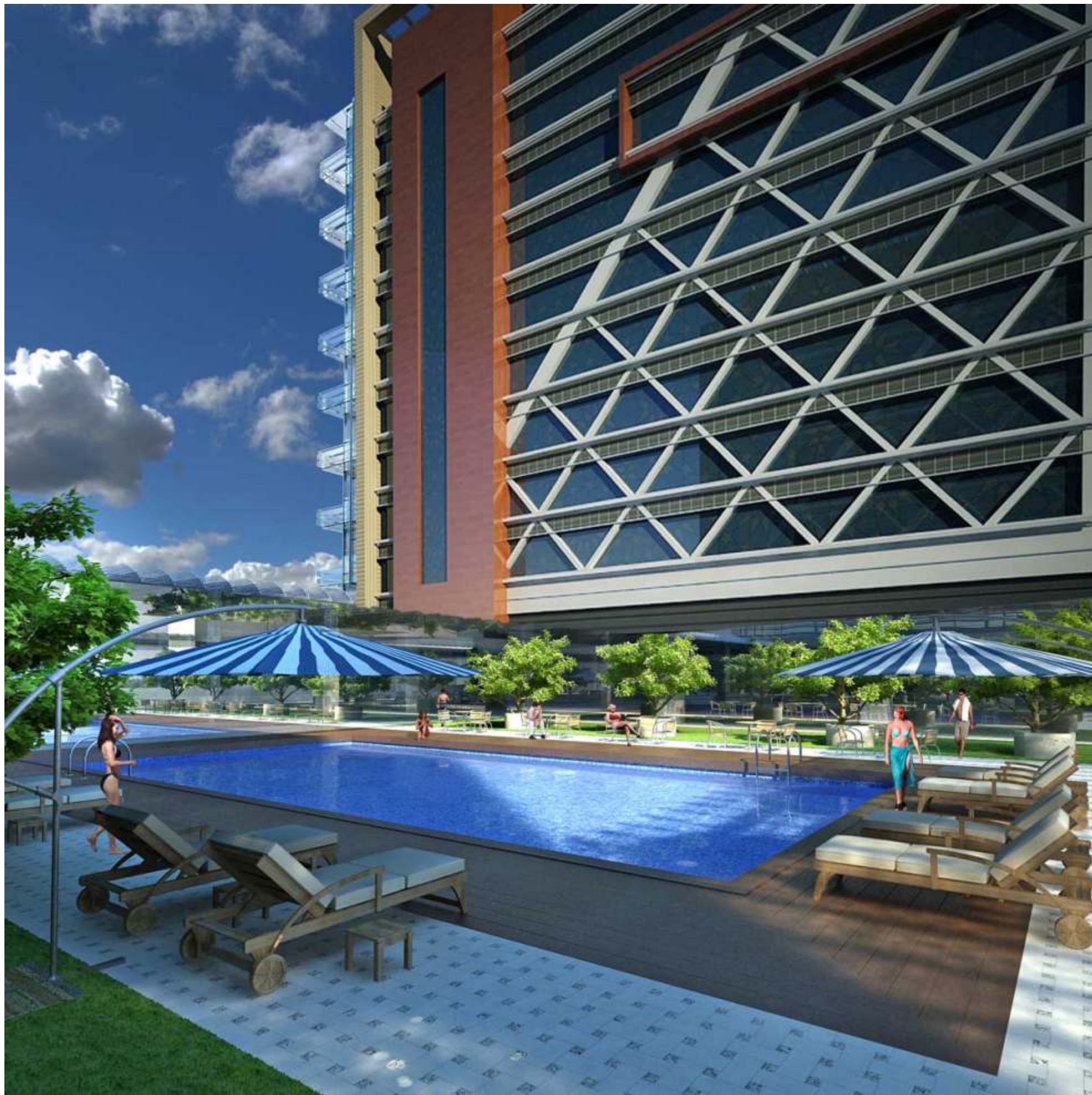
Transforming the city skyline with best of landmarks, Prism-Executive Suites is the brain child of Ninaniya Group, a name recognised for values and commitment. Reassuring with its vigour to redefine the cityscape, Prism-Executive Suites promise to add to the essence of modern living with its contemporary structure adoring the neighbourhood around.

## Commitment to create constructive spaces



Ushering in the new era of futuristic work spaces, Prism-Executive Suites is an unparalleled amalgamation of Executive Suites, Hotel and Commercial Tower; all standing in row facing the world around prestigiously. It brings along a promise of integrity and sustenance with its ever expanding vision to fulfil all modern requirements of life by offering a vibrant arena for individual businesses to grow and flourish.

Built on a strong pedigree & established reputation, this unique blend of tri-structures ensures to take your visions to new heights from where life turns to be a sober experience in every way.



## Superior services for superlative living

Equipped with exceptional amenities, Prism-Executive Suites greets you with twenty four hours front desk assistance, ready to serve you with comfort through out your presence. Geared to maximise profitability in business and resolute to let you experience sophistication, Prism-Executive Suites true to its identity personifies luxury to maximum, building an identity of its own.

Enjoy quality services defining excellence:

- 24X7 Reception/Front Desk Assistance
- 24X7 Coffee Shop
- Health Club / Gym
- Grand Entrance Lobby
- Intelligent Air-Conditioning and Lighting Systems
- Multi Tiered Business Security – Full CCTV
- Advanced Fire Protection
- Optical Fibre Connectivity
- 100% Power Back-up
- In house Maintenance Service
- In house Laundry





A vivid uptown address  
– new neighbourhood

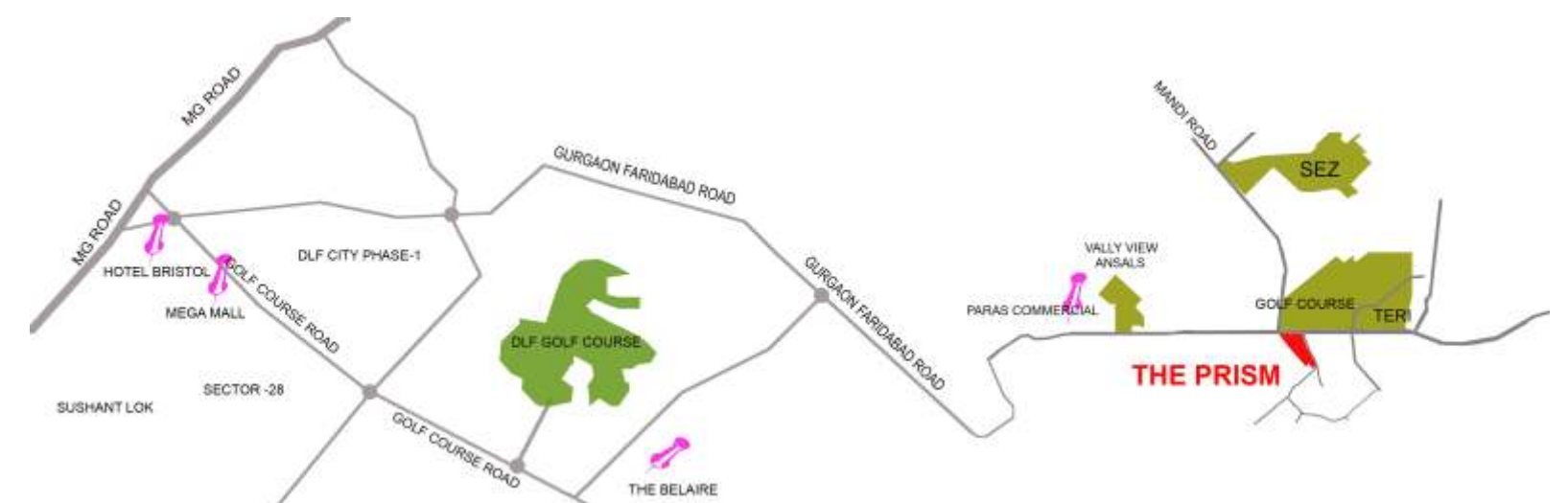


Located on the Gurgaon-Faridabad Road, the open landscaping surrounding Prism-Executive Suites let freshness stay both in your mind and space around contemplating a vivid lifestyle. Built on the concept of Green Building, the infrastructural marvel is energy efficient and earthquake resistant, leaving no room for any uncertainty to creep in. The exceptional planning behind this new neighbourhood rising up on the 150 meter express road connecting Gurgaon, Faridabad & Delhi, has everything that may give your senses the ultimate treat lasting for a lifetime. Prism-Executive Suites complement its vicinity by standing as an example of eternal spectacle inviting adoration & hinting of its power to create history.

Planned with an exceptional blend of suites, hotel & commercial spaces, it renders a vivid uptown address with fabulous connectivity to all major locations of the capital city.

Some features of the new neighbourhood are as follows:

- Location : Gurgaon – Faridabad Road
- 150 meter express road connecting NCR – Gurgaon – Delhi and Faridabad
- North East facing with scenic view
- Just 20 mins Away from South Delhi – Faridabad and Gurgaon Cyber City
- International Airport 20 kms away
- Opposite Teri Gram Golf course – lavish greenery
- SEZ, commercial and Residential towers in the vicinity
- Chattarpur junction 10 kms
- Complex comprising of Prism suites, Prism hotel and Prism Commercial tower

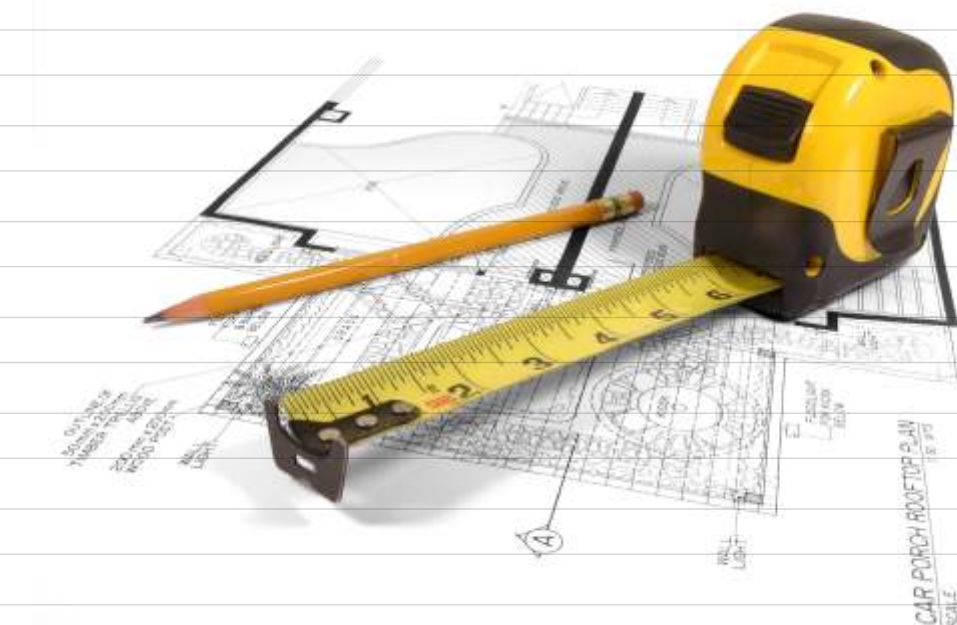


# SPECIFICATIONS

AREAS	Living Room / Dining / Lounge	Bedroom	Kitchen	Toilet
Walls	POP Punning with acrylic emulsion paint	POP Punning with acrylic emulsion paint	Imported/ Engineered marble / Premium Tiles	Imported/ Engineered marble / Premium Tiles
FLOOR	Imported / Engineered marble / wooden flooring	Imported / Engineered marble / wooden flooring	Imported/ Engineered marble / Premium Tiles	Imported/ Engineered marble / Premium Tiles
CEILING	POP Punning/ False ceiling with acrylic emulsion paint	POP Punning/ False ceiling with acrylic emulsion paint	POP Punning/ False ceiling with acrylic emulsion paint	POP Punning/ False ceiling with acrylic emulsion paint
DOORS	Flush shutters with Polished Wood veneer and Solid wood/ timber frame	Flush shutters with Polished Wood veneer and Solid wood/ timber frame	Flush shutters with Polished Wood veneer and Solid wood/ timber frame	Flush shutters with Polished Wood veneer and Solid wood/ timber frame
WINDOWS / GLAZING	Upvc/ Aluminum window frames with glass panels	Upvc/ Aluminum window frames with glass panels	Upvc/ Aluminum window frames with glass panels	Upvc/ Aluminum window frames with glass panels
ELECTRICAL	Premium modular switches and sockets, Copper wiring	Premium modular switches and sockets, Copper wiring	Premium modular switches and sockets, Copper wiring	Premium modular switches and sockets, Copper wiring
POWER BACKUP, WATER SUPPLY & FIRE FIGHTING SYSTEM	100% power backup per apartment and treated water supply & All systems for fire safety as per norms			
FACILITIES	Swimming Pool, Fitness trails, tennis courts and Jogging track, Kids play pool, toddlers water play, swings and climbing frames, adventure play zone, cycle track, amphitheatre, Dog walking tracks, Restaurant, video game room. Health club facility with fully equipped unisex gym fitted with cable TV, Jacuzzi, dance and aerobic studio, Club with lounge, kids creche with totlots, see saus, baby slides, Convenient Shopping, Doctor on call, Concierge on call, Young Kids club and Mini Club. Cooking Pipe Gas Supply, Wi fi in all buildings.			
SECURITY	CCTV for basements, Ground floor lobbies, Lift cars, Entry and exit to the development, Automatic boom barriers and manual gates at entry and exits, Intelligent access control system, panic alarm button is installed in master bedroom and a door phone near apartment entrance, Connected to security control room / management office.			



# FLOOR PLAN

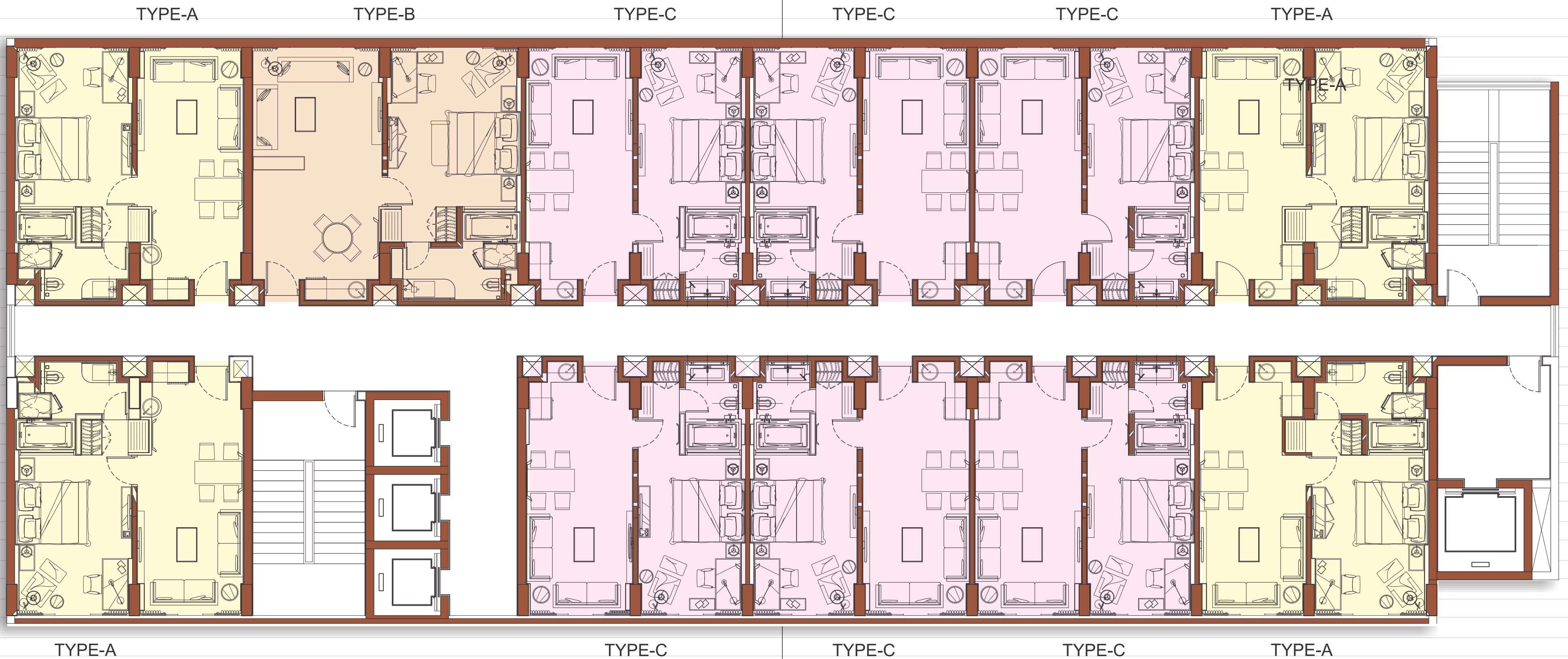






**PRESIDENTIAL SUITES  
FLOOR PLANS**

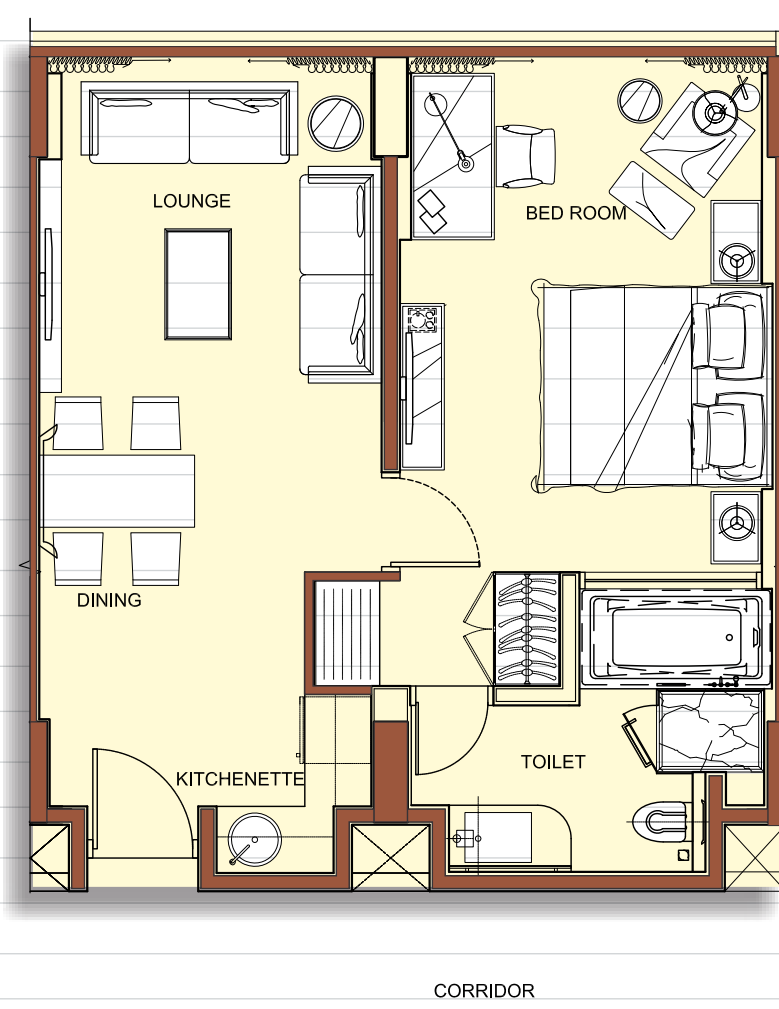
ROOM LEGEND:					
S.No.	CODE	DESCRIPTION	DIMENSIONS (L X W) in mm	DIMENSIONS (L X W) in ft.	Nos.
01	TYPE A	EXECUTIVE SUITE	6950 X 7725	22'-10" x 25'-4"	01
02	TYPE C	EXECUTIVE SUITE	6500 X 7725	21'-4" x 25'-4"	01
03	TYPE D	PRESIDENTIAL SUITE	10950 X 7725	35'-11" x 25'-4"	01
04	TYPE E	PRESIDENTIAL SUITE	10500 X 7725	34'-6" x 25'-4"	01
05	TYPE F	PRESIDENTIAL SUITE	9750 X 7725	32'-0" x 25'-4"	02
06	TYPE G	PRESIDENTIAL SUITE	10200 X 7725	33'-6" x 25'-4"	02



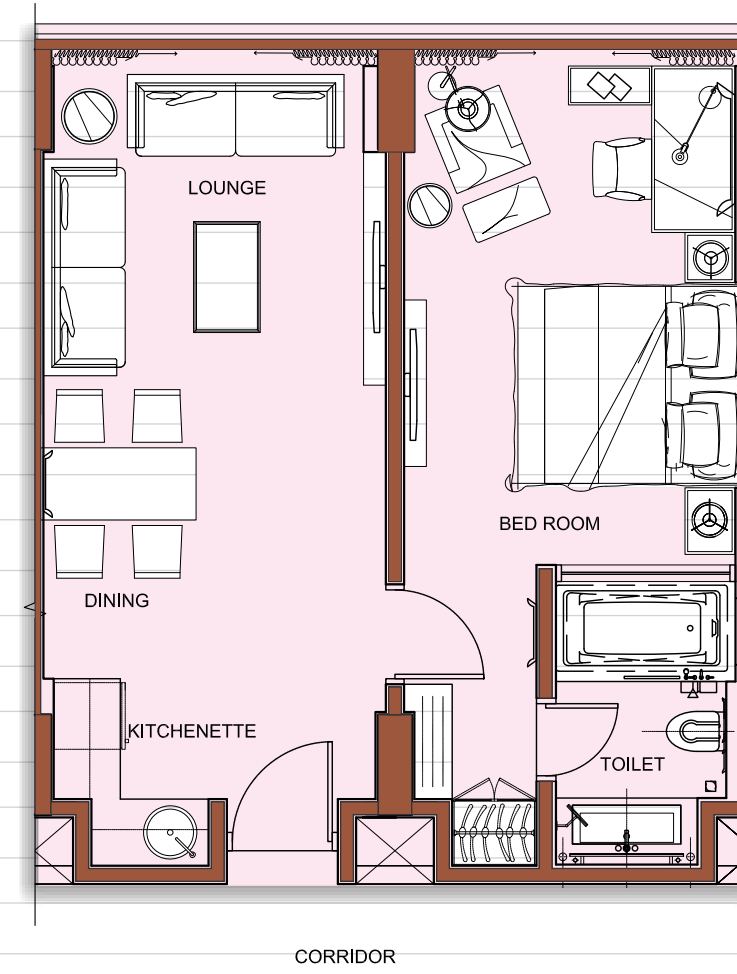
**EXECUTIVE SUITES  
FLOOR PLANS**

ROOM LEGEND:					
S.No.	CODE	DESCRIPTION	DIMENSIONS (L X W) in mm	DIMENSIONS (L X W) in ft.	Nos.
01	TYPE A	EXECUTIVE SUITE	6950 X 7725	22'-10" x 25'-4"	04
02	TYPE B	EXECUTIVE SUITE	8000 X 7725	26'-3" x 25'-4"	01
03	TYPE C	EXECUTIVE SUITE	6500 X 7725	21'-4" x 25'-4"	06

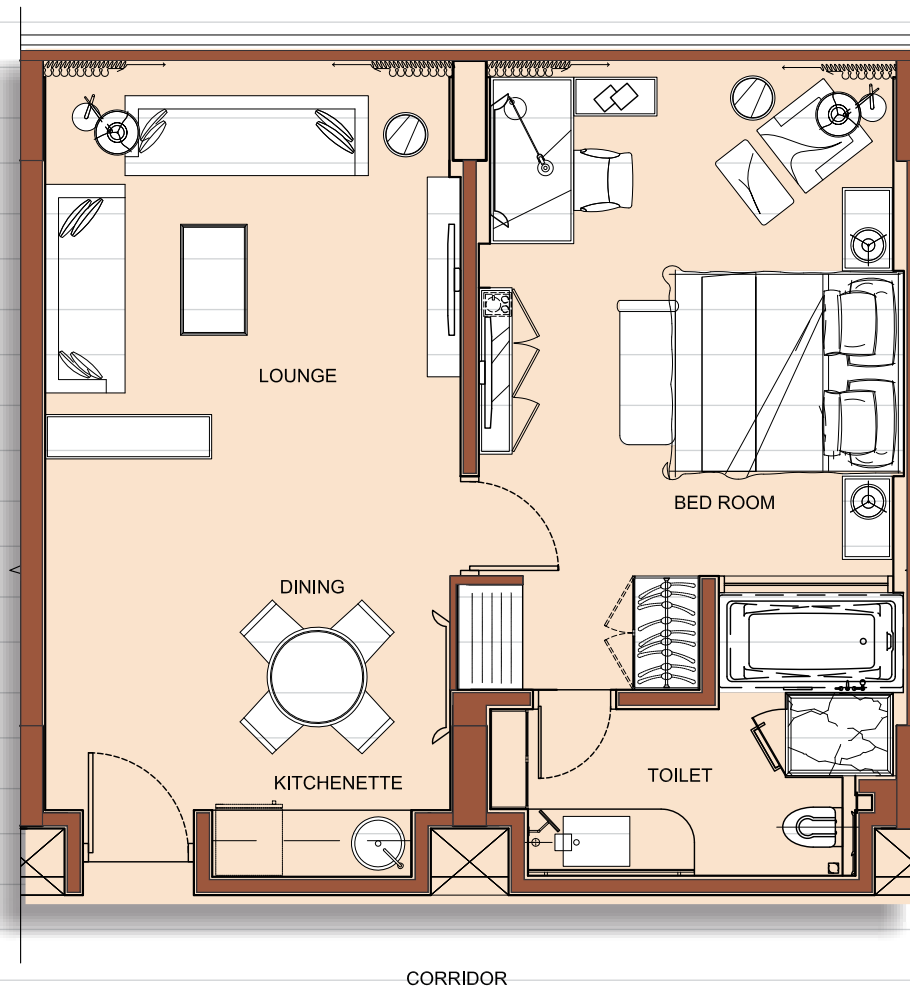
**EXECUTIVE SUITES**  
**TYPE 'A'** [22'-10" x 25'-4"]



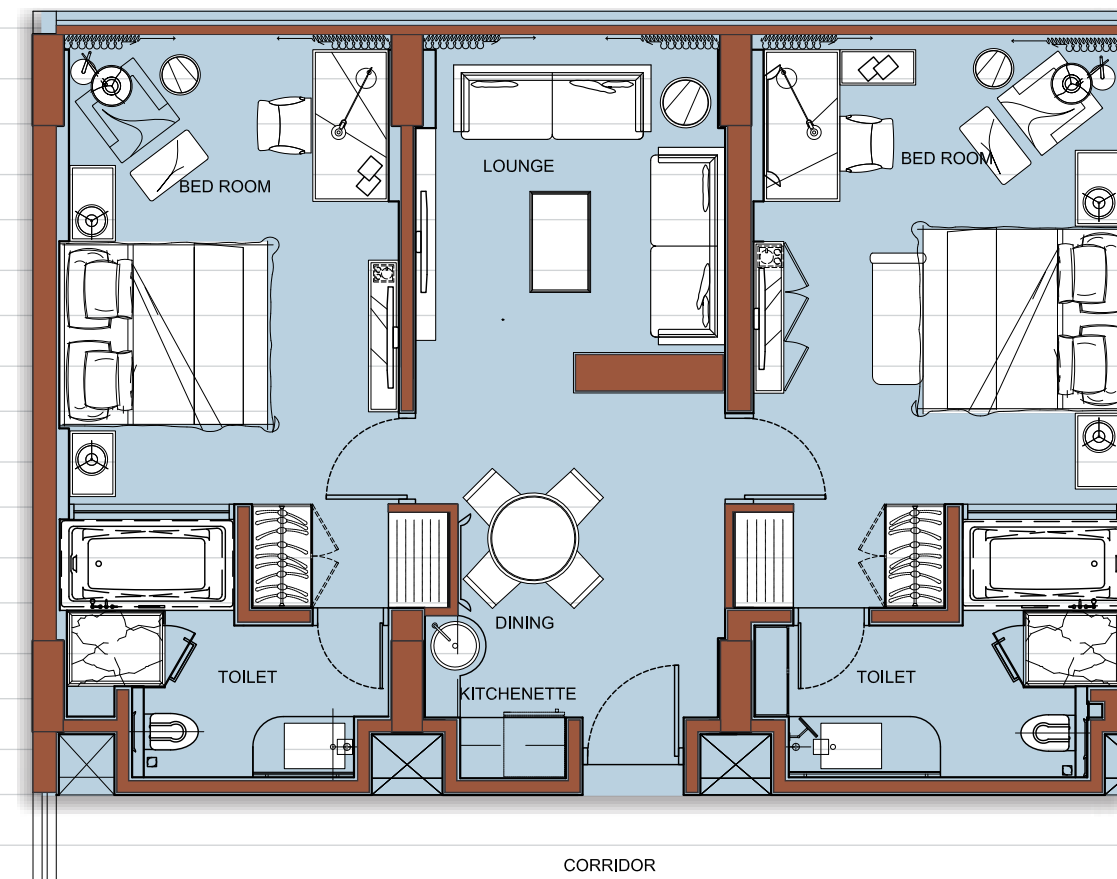
**EXECUTIVE SUITES**  
**TYPE 'C'** [12'-4" x 25'-4"]



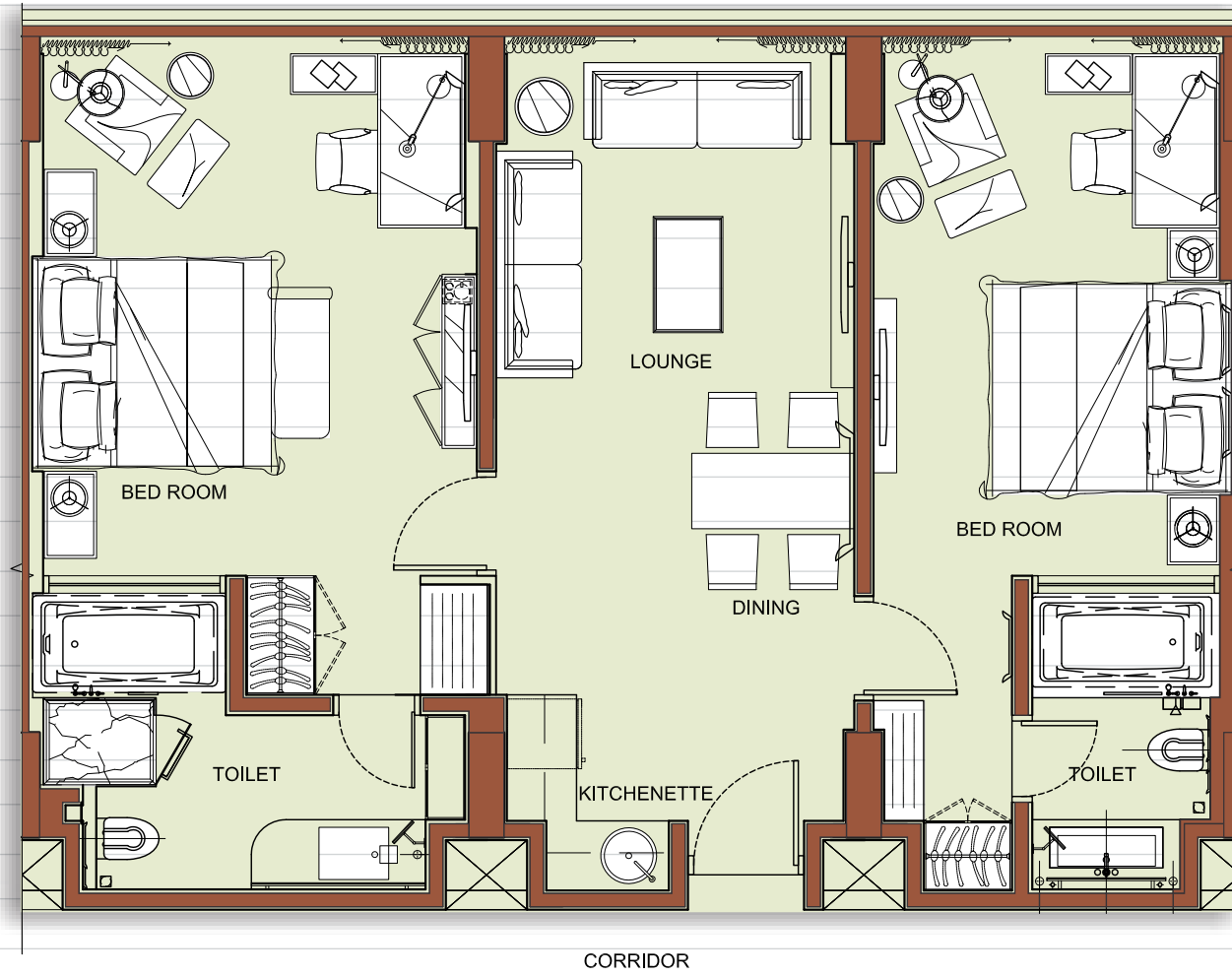
**EXECUTIVE SUITES**  
**TYPE 'B'** [26'-3" x 25'-4"]



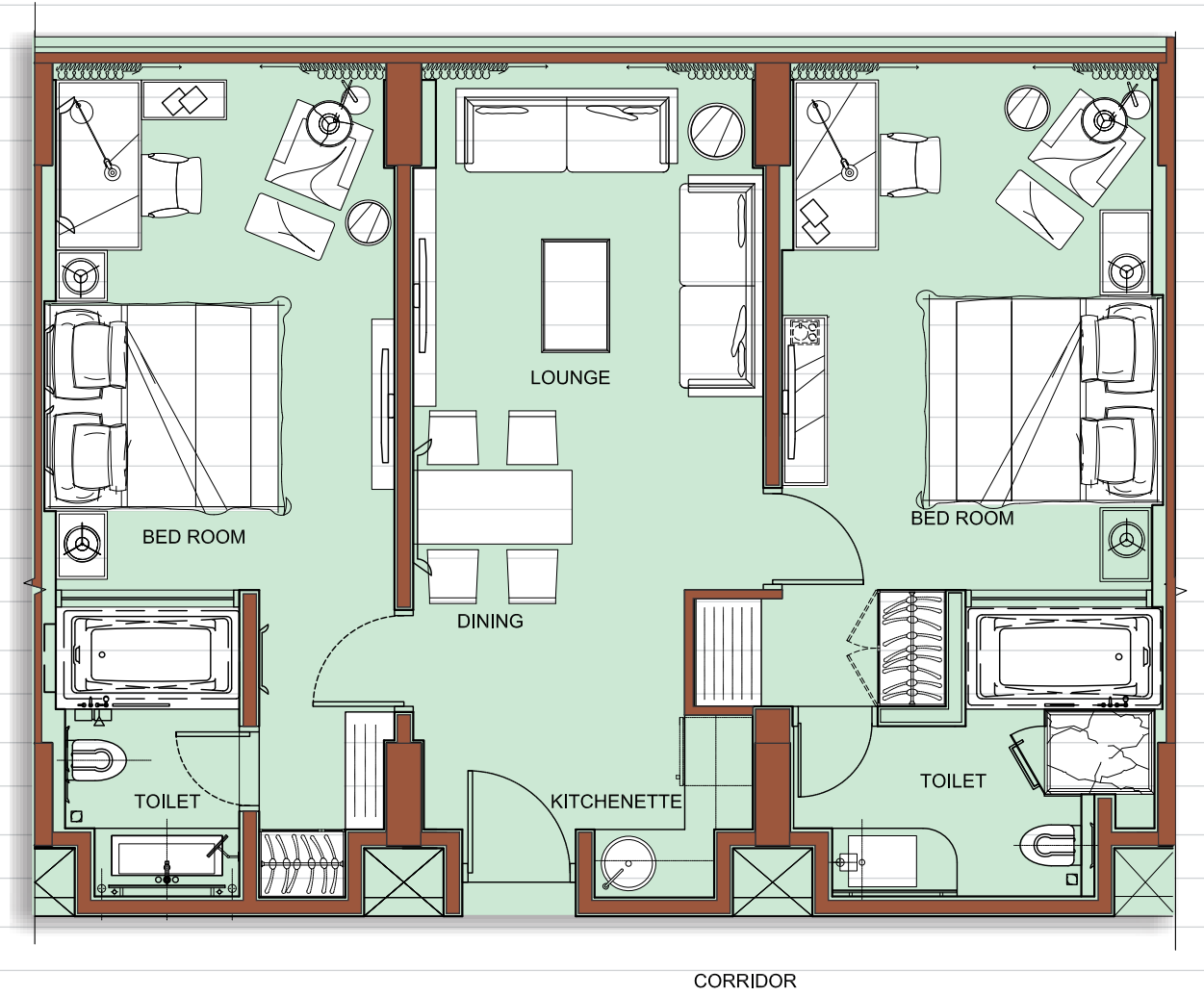
**EXECUTIVE SUITES**  
**TYPE 'D'** [35'-11" x 25'-4"]



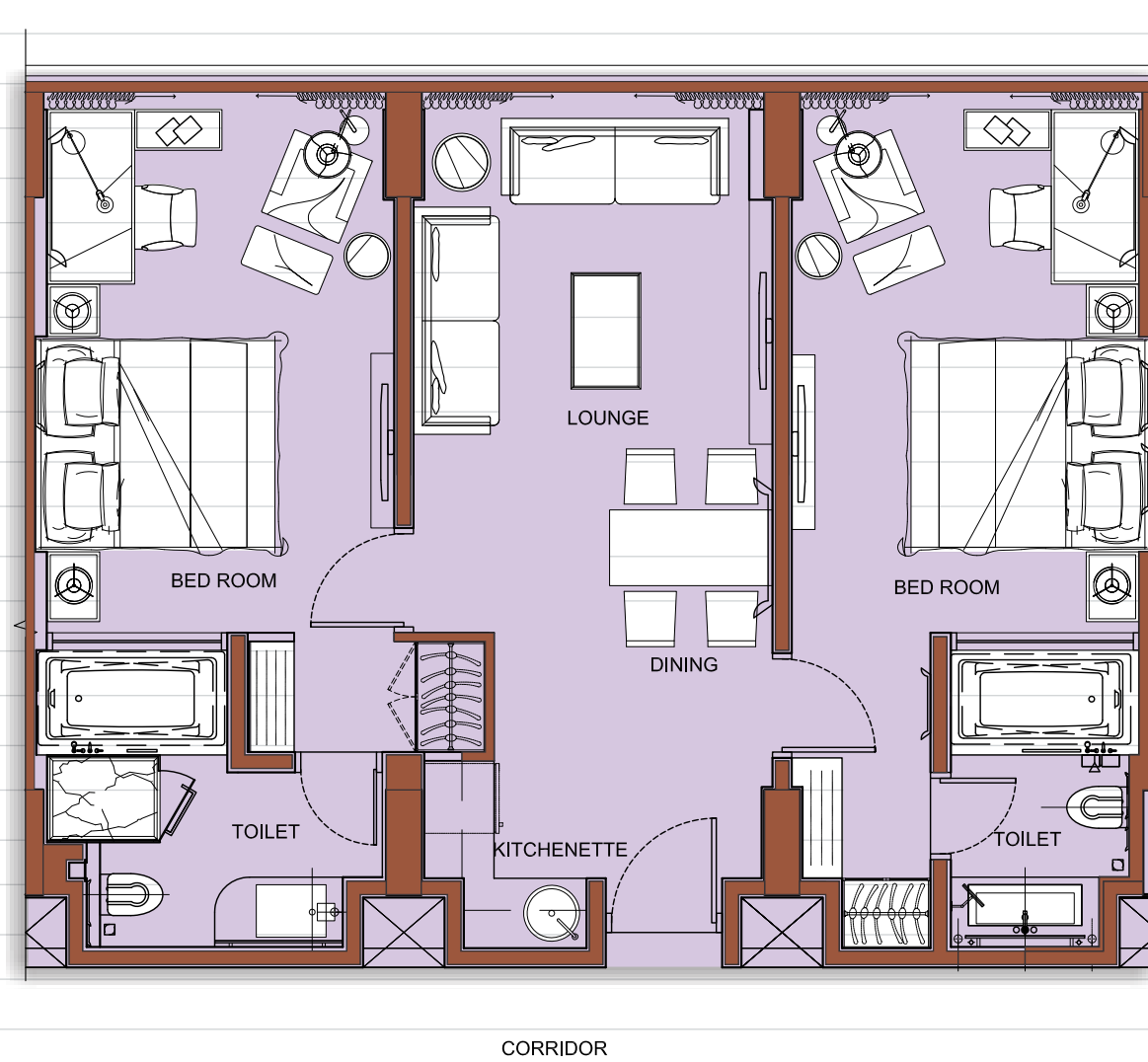
**PRESIDENTIAL SUITE**  
**TYPE 'E'** [34'-6" x 25'-4"]



**PRESIDENTIAL SUITE**  
**TYPE 'G'** [33'-6" x 25'-4"]



**PRESIDENTIAL SUITE**  
**TYPE 'F'** [32' x 25'-4"]





**PRISM**  
EXECUTIVE SUITES

architects

  
**VASTUKRITI**  
ARCHITECTURE • INTERIORS • MANAGEMENT